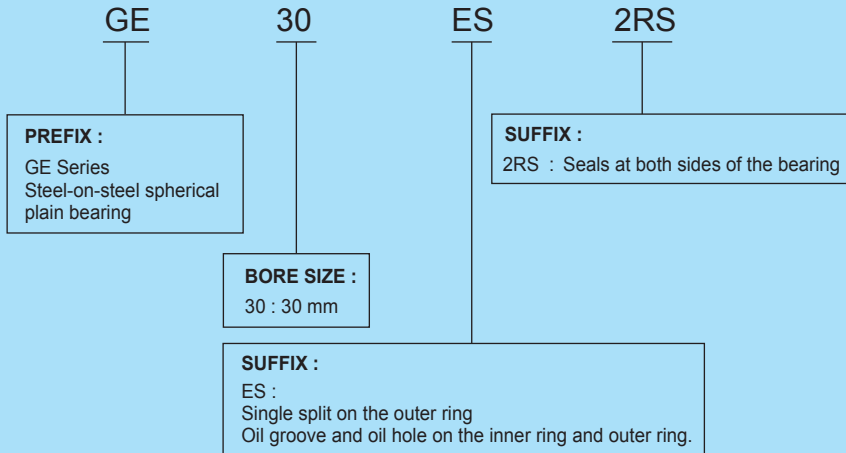


■ Prefix & Suffix : (Example) GE 30 ES 2RS



SPHERICAL PLAIN BEARINGS

Bore Diameter

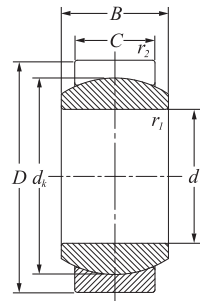
d = 4- 45 mm.....	J 145
d = 50- 200 mm.....	J 147
d = 220-300 mm.....	J 149

ШАРНИРНЫЕ ПОДШИПНИКИ

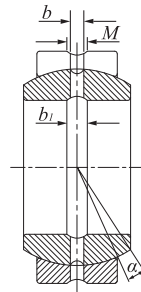
Внутренний Диаметр

ШП (d = 4- 300 mm)	J 151-J 152
ШСП (d = 4- 300 mm)	J 153-J 154
ШСП..К (d = 4- 300 mm)	J 155-J 156
ШСЛ (d = 4- 300 mm)	J 157-J 158
ШСЛ..К (d = 4- 300 mm)	J 159-J 160
ШСЛ..К1 (d = 4- 300 mm)	J 161-J 162
ШСШ..К (d = 12- 320 mm)	J 163

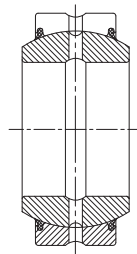
Bore Diameter $d=4 - 45 \text{ mm}$



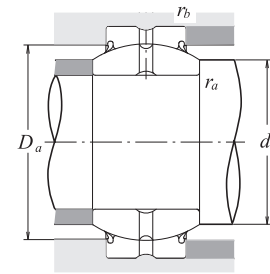
GE..E



GE..ES



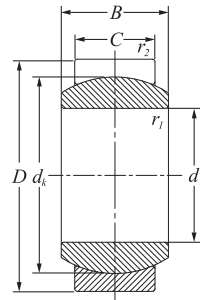
GE..ES-2RS



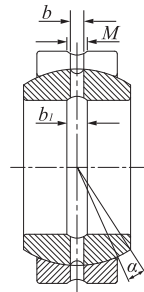
d	Main Dimensions										Angle α	Basic Load Ratings		Mass approx.		
	D	B	C	dk	b	b1	M	r1 min	r2 min	C		Co				
mm													degrees	kN		kg
4	12	5	3	8	-	-	-	0.3	0.3	16	2.04	10.2	0.003			
5	14	6	4	10	-	-	-	0.3	0.3	13	3.4	17	0.004			
6	14	6	4	10	-	-	-	0.3	0.3	13	3.4	17	0.004			
8	16	8	5	13	-	-	-	0.3	0.3	15	5.5	27.5	0.008			
10	19	9	6	16	-	-	-	0.3	0.3	12	8.15	40.5	0.012			
12	22	10	7	18	-	-	-	0.3	0.3	10	10.8	54	0.017			
15	26	12	9	22	2.3	2.3	1.5	0.3	0.3	8	17	85	0.032			
	26	12	9	22	2.3	2.3	1.5	0.3	0.3	8	17	85	0.032			
17	30	14	10	25	2.3	2.3	1.5	0.3	0.3	10	21.2	106	0.05			
	30	14	10	25	2.3	2.3	1.5	0.3	0.3	10	21.2	106	0.05			
20	35	16	12	29	3.1	3.1	2	0.3	0.3	9	30	146	0.065			
	35	16	12	29	3.1	3.1	2	0.3	0.3	9	30	146	0.065			
25	42	20	16	35.5	3.1	3.1	2	0.6	0.6	7	48	240	0.12			
	42	20	16	35.5	3.1	3.1	2	0.6	0.6	7	48	240	0.12			
30	47	22	18	40.7	3.1	3.1	2	0.6	0.6	6	62	310	0.16			
	47	22	18	40.7	3.1	3.1	2	0.6	0.6	6	62	310	0.16			
35	55	25	20	47	3.9	3.9	2.5	0.6	1	6	80	400	0.23			
	55	25	20	47	3.9	3.9	2.5	0.6	1	6	80	400	0.23			
40	62	28	22	53	3.9	3.9	2.5	0.6	1	7	100	500	0.32			
	62	28	22	53	3.9	3.9	2.5	0.6	1	6	100	500	0.32			
45	68	32	25	60	4.6	4.6	3	0.6	1	7	127	640	0.46			
	68	32	25	60	4.6	4.6	3	0.6	1	7	127	640	0.46			

Bearing Numbers	Abutment and Fillet Dimensions					
	da		Da		ra	
	min.	max.	max.	min.	max.	
	mm					
GE 4 E	5.5	6.2	10.7	7.6	0.3	0.3
GE 5 E	6.6	8	12.6	9.5	0.3	0.3
GE 6 E	7.5	8	12.6	9.5	0.3	0.3
GE 8 E	9.6	10.2	14.5	12.3	0.3	0.3
GE 10 E	11.7	13.2	17.5	15.2	0.3	0.3
GE 12 E	13.8	15	20.4	17.1	0.3	0.3
GE 15 ES	16.9	18.4	24.3	20.9	0.3	0.3
GE 15 ES-2RS	16.9	18.4	24.3	22.8	0.3	0.3
GE 17 ES	19	20.7	28.3	23.7	0.3	0.3
GE 17 ES-2RS	19	20.7	28.3	26	0.3	0.3
GE 20 ES	22.1	24.2	33.2	27.6	0.3	0.3
GE 20 ES-2RS	22.1	24.2	33.2	30.9	0.3	0.3
GE 25 ES	28.2	29.3	39.2	33.7	0.6	1
GE 25 ES-2RS	28.2	29.3	39.2	36.9	0.6	1
GE 30 ES	33.3	34.2	44	38.7	0.6	1
GE 30 ES-2RS	33.3	34.2	44	41.3	0.6	1
GE 35 ES	38.5	39.8	50.9	44.6	0.6	1
GE 35 ES-2RS	38.5	39.8	50.9	48.6	0.6	1
GE 40 ES	43.6	45	57.8	50.3	0.6	1
GE 40 ES-2RS	43.6	45	57.8	54.5	0.6	1
GE 45 ES	49.4	50.8	63.6	57	0.6	1
GE 45 ES-2RS	49.4	50.8	63.6	61	0.6	1

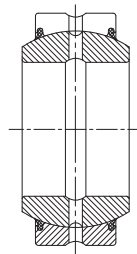
Bore Diameter $d=50-200\text{ mm}$



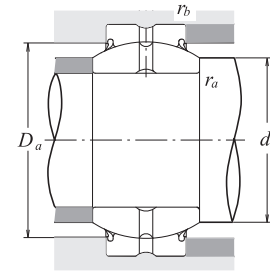
GE..E



GE..ES



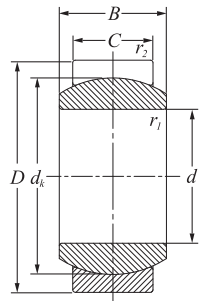
GE..ES-2RS



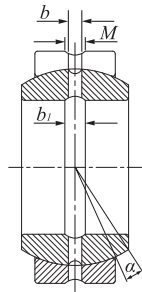
Main Dimensions											Angle	Basic Load Ratings		Mass
d	D	B	C	d_k	b	b_1	M	r_1 min	r_2 min	α	C	C_o	approx.	
mm											degrees	kN		kg
50	75	35	28	66	4.6	4.6	3	0.6	1	6	156	780	0.56	
	75	35	28	66	4.6	4.6	3	0.6	1	6	156	780	0.56	
60	90	44	36	80	6.2	6.2	4	1	1	6	245	1220	1.1	
	90	44	36	80	6.2	6.2	4	1	1	6	245	1220	1.1	
70	105	49	40	92	7.7	7.7	4	1	1	6	315	1560	1.55	
	105	49	40	92	7.7	7.7	4	1	1	6	315	1560	1.55	
80	120	55	45	105	7.7	7.7	4	1	1	6	400	2000	2.3	
	120	55	45	105	7.7	7.7	4	1	1	5	400	2000	2.3	
90	130	60	50	115	9.5	9.5	5	1	1	5	490	2450	2.75	
	130	60	50	115	9.5	9.5	5	1	1	5	490	2450	2.75	
100	150	70	55	130	11.3	11.3	5	1	1	7	610	3050	4.4	
	150	70	55	130	11.3	11.3	5	1	1	6	610	3050	4.4	
110	160	70	55	140	11.5	11.5	5	1	1	6	655	3250	4.8	
	160	70	55	140	11.5	11.5	5	1	1	6	655	3250	4.8	
120	180	85	70	160	13.5	13.5	6	1	1	6	950	4750	8.25	
	180	85	70	160	13.5	13.5	6	1	1	6	950	4750	8.25	
140	210	90	70	180	13.5	13.5	6	1	1	7	1080	5400	11	
	210	90	70	180	13.5	13.5	6	1	1	7	1080	5400	11	
160	230	105	80	200	13.5	13.5	6	1	1	8	1370	6800	14	
	230	105	80	200	13.5	13.5	6	1	1	8	1370	6800	14	
180	260	105	80	225	13.5	13.5	6	1.1	1.1	6	1530	7650	18.5	
	260	105	80	225	13.5	13.5	6	1.1	1.1	6	1530	7650	18.5	
200	290	130	100	250	15.5	15.5	7	1.1	1.1	7	2120	10600	28	
	290	130	100	250	15.5	15.5	7	1.1	1.1	7	2120	10600	28	

Bearing Numbers	Abutment and Fillet Dimensions					
	d_a		D_a		r_a	
	min.	max.	max.	min.	max.	max.
	mm					
GE 50 ES	54.6	56	70.5	62.7	0.6	1
GE 50 ES-2RS	54.6	56	70.5	66.2	0.6	1
GE 60 ES	66.4	66.8	84.2	76	1	1
GE 60 ES-2RS	66.4	66.8	84.2	79.7	1	1
GE 70 ES	76.7	77.9	99	87.4	1	1
GE 70 ES-2RS	76.7	77.9	99	92	1	1
GE 80 ES	87.1	89.4	113.8	99.7	1	1
GE 80 ES-2RS	87.1	89.4	113.8	104.4	1	1
GE 90 ES	97.4	98.1	123.5	109.3	1	1
GE 90 ES-2RS	97.4	98.1	123.5	112.9	1	1
GE 100 ES	107.8	109.5	143.2	123.5	1	1
GE 100 ES-2RS	107.8	109.5	143.2	131	1	1
GE 110 ES	118	121	153	133	1	1
GE 110 ES-2RS	118	121	153	141.5	1	1
GE 120 ES	129.5	135.5	172	152	1	1
GE 120 ES-2RS	129.5	135.5	172	157.5	1	1
GE 140 ES	149	155.5	202.5	171	1	1
GE 140 ES-2RS	149	155.5	202.5	180	1	1
GE 160 ES	169.5	170	222	190	1	1
GE 160 ES-2RS	169.5	170	222	197	1	1
GE 180 ES	191	199	250.5	214	1	1
GE 180 ES-2RS	191	199	250.5	224.5	1	1
GE 200 ES	212.5	213.5	279.5	237.5	1	1
GE 200 ES-2RS	212.5	213.5	279.5	244.5	1	1

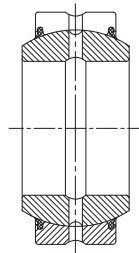
Bore Diameter $d=220 - 300$ mm



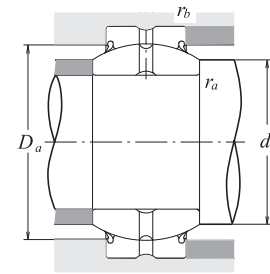
GE..E



GE..ES



GE..ES-2RS



d	Main Dimensions										Angle α	Basic Load Ratings		Mass approx.		
	D	B	C	d_k	b	b_1	M	r_1 min	r_2 min	C		C_o				
mm													degrees	kN		kg
220	320	135	100	275	15.5	15.5	7	1.1	1.1	8	2320	11600	35.5			
240	340	140	100	300	15.5	15.5	7	1.1	1.1	8	2550	12700	40			
260	370	150	110	325	15.5	15.5	7	1.1	1.1	7	3050	15300	51.5			
280	400	155	120	350	15.5	15.5	7	1.1	1.1	6	3550	18000	65			
300	430	165	120	375	15.5	15.5	7	1.1	1.1	7	3800	1900	78.5			

Bearing Numbers	Abutment and Fillet Dimensions					
	d_a		D_a		r_a	
	min.	max.	max.	min.	max.	max.
mm						
GE 220 ES-2RS	232.5	239.5	309.5	271	1	1
GE 240 ES-2RS	252.5	265	329.5	298	1	1
GE 260 ES-2RS	273	288	359	321.5	1	1
GE 280 ES-2RS	294	313.5	388.5	344.5	1	1
GE 300 ES-2RS	314	336.5	418.5	371	1	1